

690 € / month

Rentals apartment

2 rooms

Surface : 45 m²

Surface of the living : 19 m²

Exposition : SUD

View : Dégagée

Hot water : Collective

Inner condition : Good

Features :

lift, Secured residence, Calm, Electric shutters

1 bedroom

1 terrace

1 shower

1 WC

1 parking



Apartment Grasse

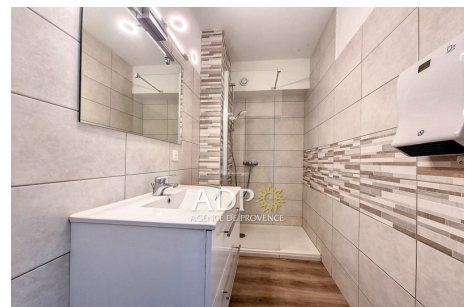
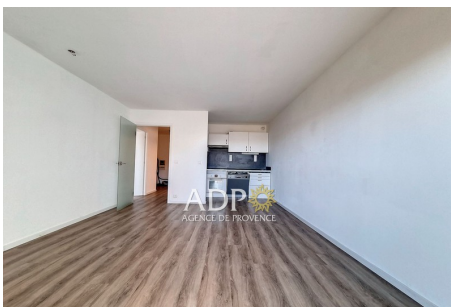
F2 of 40 m², with terrace, in a residence, near the City Center of Grasse and Sous Prefecture. Residence "Admiral of Grasse" The accommodation is located on the ground floor, including an entrance, a living room with kitchenette, a bedroom, a bathroom, a toilet. A terrace, 1 parking in the basement Rent 460 euros charge 125 euros deposit 460 euros Agency fees 400 euros including the fees inventory. Rental Condition: Can justify 3 times more income than the rent.

Fees and charges

Monthly rent 690 € with charges including 150 € provision for charges with annual settlement %} (excluding charges 540 €).

400 € VAT of fees paid by the tenant (including 200 € VAT for state of the property), 540 € for security deposit,

Energy class (dpe) : D - Emission of greenhouse gases (ges) : B
 Estimated annual energy between 716 and 968 € (reference year 2022)
 Document non contractuel - 02/05/2025



Agence de Provence - 6 place de la Foux - 06130 Grasse

Tél. +33 (0)4 93 36 07 50 - Info@agencedeprovence.com - www.agencedeprovence.com

RCS B 415 851 112 - Code NAF 6831Z - SIRET 415 851 112 00011 - Document non contractuel