

260 000 €

**For sale apartment**

**2 rooms**

**Surface : 38 m²**

**Surface of the living : 25 m²**

**Year of construction : 1990**

**Exposition : Sud ouest**

**View : Mer**

**Hot water : Individuelle**

**Inner condition : Good**

**Standing : Residential**

**Building condition : Good**

**Features :**

Double Glazing, Secured residence, Calm,  
 Parc, Residential, Pool

1 bedroom

1 shower

1 WC

1 parking

1 cellar

**Legal information**

260 000 €

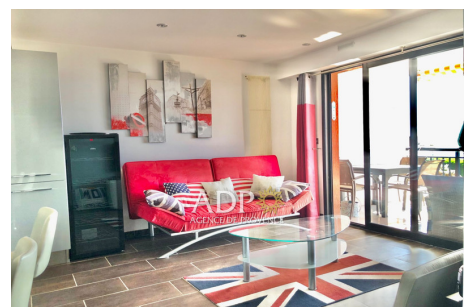
Fees paid by the owner, well condominium,  
 annual current expenses 1 620 €  
 (135 € monthly), no current procedure,  
 information on the risks to which this  
 property is exposed is available on  
[georisques.gouv.fr](http://georisques.gouv.fr).



## Apartment 2748 Mandelieu-la-Napoule

Grand Duke's Estate Ideally located in a charming residence, 2-room apartment in perfect condition including: entrance hall, large living room opening onto a beautiful terrace of approximately 14m² with sea and mountain views, open fitted kitchen, bedroom, shower room with walk-in shower, separate toilet, no wasted space, very bright, a cellar and a parking space complete this property. Luxury estate with swimming pool, tennis court, and 24-hour caretaker with a gated entrance. Peace and quiet guaranteed. See it soon.

Energy class (dpe) : C - Emission of greenhouse gases (ges) : C  
 Document non contractuel - 01/05/2025



**Agence de Provence - 6 place de la Foux - 06130 Grasse**

Tél. +33 (0)4 93 36 07 50 - [Info@agencedeprovence.com](mailto:Info@agencedeprovence.com) - [www.agencedeprovence.com](http://www.agencedeprovence.com)

RCS B 415 851 112 - Code NAF 6831Z - SIRET 415 851 112 00011 - Document non contractuel